

**RF Load 100 Watts High Power To 2.7 GHz Low PIM  
 Black Anodized Aluminum 7/16 DIN Male**

Fairview Microwave's FMTR1033 is a high power RF cable termination (also called RF load or dummy load) that operates from 698 to 2,700 MHz and handles up to 100 Watts CW. Our 7/16 DIN termination / load is a 50 Ohm impedance and has a male gender. FMTR1033 load termination offers 1.07:1 Typical VSWR and low PIM (passive intermodulation) of -160 dBc. This Fairview Microwave 100 Watts terminator has a heatsink body which is designed to provide adequate heat dissipation within its full frequency of operation.

RF load / terminations are indispensable components in many RF, microwave and millimeter wave systems where signal reflection from unused ports can potentially damage the device or reduce the signal integrity. By terminating an unused port with a matched load (dummy load), the incident energy will be absorbed with minimal reflection. These termination components are commonly used to terminate devices such as couplers, hybrids, and combiners. They are also widely used in measurement systems to ensure accurate results. Fairview Microwave offers a huge selection of RF, microwave and millimeter wave terminations up to 65 GHz with excellent performance over the entire operating range and power handling capabilities up to 800 Watts CW.



**Features:**

- High Power
- RF 50 Ohm Impedance
- 698 to 2,700 MHz Frequency Range
- Typical VSWR 1.07:1
- Max Power 100 Watts CW
- Low PIM
- 7/16 DIN Male Coaxial Interface
- DC Open

**Applications:**

- Wireless
- SatCom
- Test and Measurement
- Commercial and Military Communication
- Base Station
- 4G/AWS/PCS

**Electrical Specifications**

| Description             | Min   | Typ    | Max    | Units |
|-------------------------|-------|--------|--------|-------|
| Frequency Range         | 0.698 |        | 2.7    | GHz   |
| Impedance               |       | 50     |        | Ohms  |
| VSWR                    |       | 1.07:1 | 1.15:1 |       |
| Return Loss             |       | 30     | 23     | dB    |
| Passive Intermodulation | -160  |        |        | dBc   |
| Input Power (CW)        |       |        | 100    | Watts |

**Mechanical Specifications**

|             |                      |
|-------------|----------------------|
| <b>Size</b> |                      |
| Length      | 6.77 in [171.96 mm]  |
| Width       | 4 in [101.6 mm]      |
| Height      | 3.19 in [81.03 mm]   |
| Weight      | 5.0845 lbs [2.31 Kg] |

**Configuration**

Connector 7/16 DIN Male

**Material Specifications**

| Description | Material                | Plating |
|-------------|-------------------------|---------|
| Housing     | Black Anodized Aluminum |         |

**Compliance Certifications** (see [product page](#) for current document)

**Plotted and Other Data**

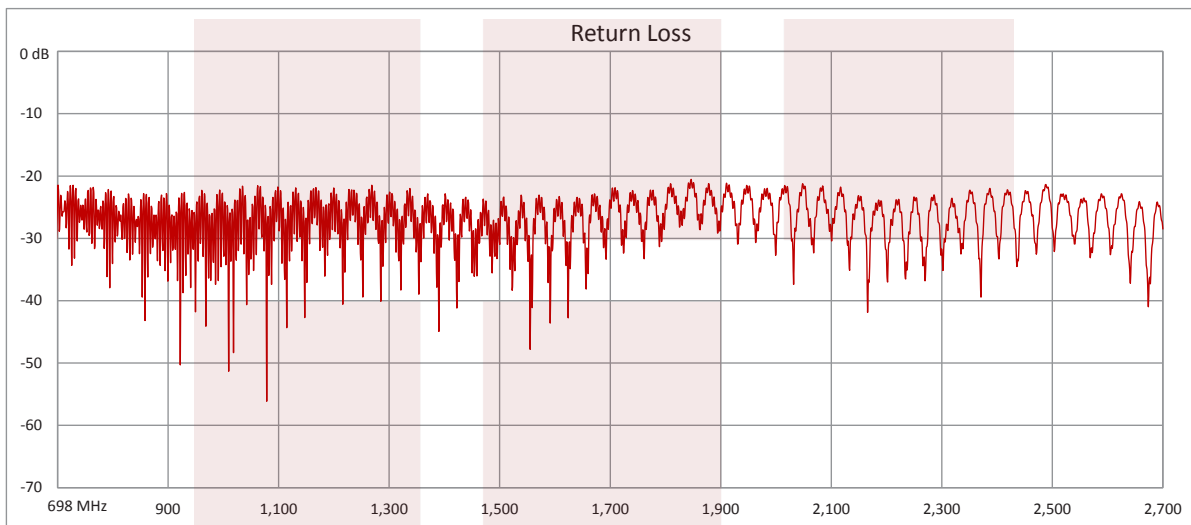
Notes:

Fairview Microwave  
 1130 Junction Dr. #100  
 Allen, TX 75013  
 Tel: 1-800-715-4396 / (972) 649-6678  
 Fax: (972) 649-6689  
[www.fairviewmicrowave.com](http://www.fairviewmicrowave.com)  
[sales@fairviewmicrowave.com](mailto:sales@fairviewmicrowave.com)

**Typical Performance Data**

**Passive Intermodulation Test Data**

| Tone 1<br>Frequency (MHz) | Tone 2<br>Frequency (MHz) | IM3<br>Frequency (MHz) | PIM<br>Minimum (dBc) |
|---------------------------|---------------------------|------------------------|----------------------|
| 1945.0                    | 1990.0                    | 1900.0                 | -160.0               |
| P1                        | P2                        | PIM                    | Result               |
| 43.0 dBm                  | 43.0 dBm                  | -174.6 dBc             | Pass                 |

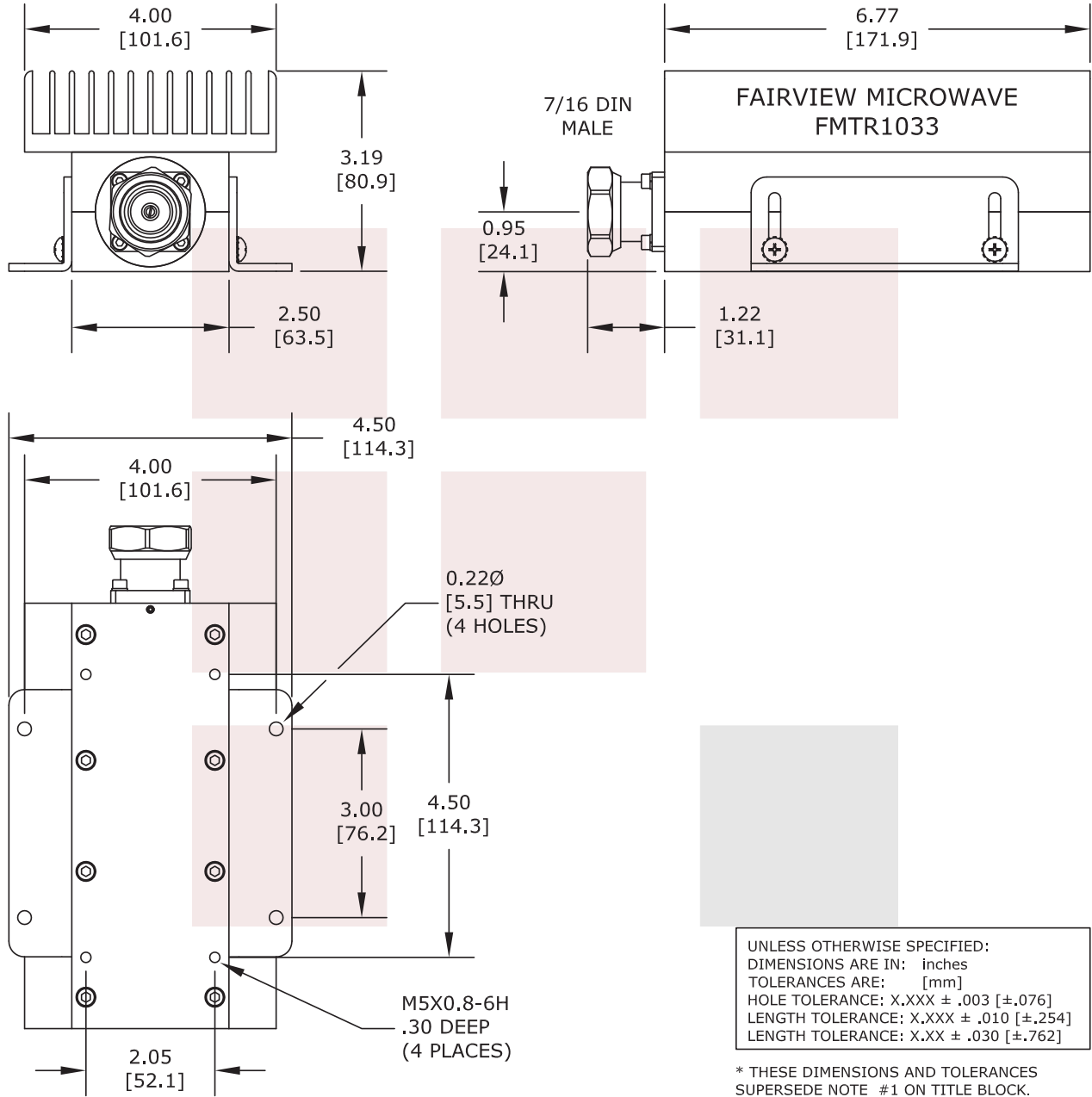


RF Load 100 Watts High Power To 2.7 GHz Low PIM Black Anodized Aluminum 7/16 DIN Male from Fairview Microwave is in-stock and available to ship same-day. All of our RF/microwave products are available off-the-shelf from our ISO 9001:2008 certified facilities in Allen, Texas. Fairview Microwave is RF on-demand.

For additional information on this product, please click the following link: [RF Load 100 Watts High Power To 2.7 GHz Low PIM Black Anodized Aluminum 7/16 DIN Male FMTR1033](https://www.fairviewmicrowave.com/rf-load-100-watts-2.7-ghz-low-pim-7-16-din-male-fmtr1033)

URL: <https://www.fairviewmicrowave.com/rf-load-100-watts-2.7-ghz-low-pim-7-16-din-male-fmtr1033-p.aspx>

The information contained in this document is accurate to the best of our knowledge and representative of the part described herein. It may be necessary to make modifications to the part and/or the documentation of the part, in order to implement improvements. Fairview Microwave reserves the right to make such changes as required. Unless otherwise stated, all specifications are nominal. Fairview Microwave does not make any representation or warranty regarding the suitability of the part described herein for any particular purpose, and Fairview Microwave does not assume any liability arising out of the use of any part or documentation.



|   |        |   |       |                    |             |
|---|--------|---|-------|--------------------|-------------|
| <b>FAIRVIEW MICROWAVE INC.</b><br>ALLEN, TX 75013 WWW.FAIRVIEWMICROWAVE.COM                       |        | NOTES:<br>1. UNLESS OTHERWISE SPECIFIED ALL DIMENSIONS ARE NOMINAL.<br>2. ALL SPECIFICATIONS ARE SUBJECT TO CHANGE WITHOUT NOTICE AT ANY TIME.<br>3. DIMENSIONS ARE IN INCHES [mm]. |       |                    |             |
| TITLE<br>RF Load 100 Watts High Power To 2.7 GHz Low PIM<br>Black Anodized Aluminum 7/16 DIN Male |        | DWG NO<br>FMTR1033  |       | CAGE CODE<br>3FKR5 |             |
| CAD FILE  | 053116 | SHEET   | SCALE | N/A                | SIZE A 2233 |