



Applicable for research with cyan and a wide range of fluorescence, the Dino-Lite EDGE AM4115T-CFVW digital microscope is one of the world's smallest fluorescence microscopes with near UV excitation LEDs integrated. With its small form factor, it impacts the microscopy world by changing how the fluorescence microscope can be used for research by no longer needing to be bulky, heavy, expensive, or delicate.

Overview



The world's smallest fluorescence microscope

The AM4115T-CFVW cleverly integrates special 400nm LED excitation lights and a high-pass type emission filter that cuts off at 430nm into a Dino-Lite digital microscope. This makes it the smallest microscope capable of visualizing cyan and also a wide range of fluorescence for applications such as in: developmental biology, pathology, and anatomy. It also packs a white LED for non-excitation lighting to assist in locating points of interest.



High sensitivity to orange to red fluorescence

The Dino-Lite uses a high sensitivity 1.3 Megapixels sensor combined with a specially designed lens to capture faint fluorescent signals with results comparable to some traditional microscope capabilities.



Convenient flexible magnification

The Dino-Lite is capable of variable magnification with a range of 20x~220x depending of working distance by simply zooming in or out with just a rotating dial.



USB 2.0 Interface

It only requires USB 2.0 to power the device so it can be connected or travel with a compatible PC/ MAC for analysis and documentation with its bundled software.

Interchangeable Front Caps



N3C-OB / Open Cap

This is the standard cap for Fluorescence model usage.

Information about working distance and field of view

M	WD	FOV (x)	FOV (y)	DOF
20	60.2	19.5	15.6	1.52
30	33.5	13	10.4	
40	20.9	9.8	7.8	
50	13.9	7.8	6.3	0.3
60	9.7	6.5	5.2	
70	7.1	5.6	4.5	
80	5.5	4.9	3.9	
90	4.5	4.3	3.5	
100	4.1	3.9	3.1	
110	4	3.6	2.8	
120	4.1	3.3	2.6	
130	4.5	3	2.4	
140	5	2.8	2.2	
150	5.6	2.6	2.1	
160	6.3	2.4	2	
170	7.1	2.3	1.8	
180	8	2.2	1.7	
190	8.9	2.1	1.6	
200	9.9	2	1.6	0.04
210	10.9	1.9	1.5	
220	11.9	1.8	1.4	

M = magnification rate WD = working distance (without front cap) FOV = field of view DOF = depth of field Unit = mm

Specification

Model : AM4115T-CFVW Dino-Lite Edge

Interface : USB 2.0

Product Resolution : 1.3M pixels (SXGA)

Magnification Rate : 20x~220x

Sensor : Color CMOS

Frame Rate : Up to 30fps

-Save Formats:

+Image:

DinoCapture2.0: BMP, GIF, PNG, MNG, TIF, TGA, PCX, WBMP, JP2, JPC, JPG, PGX, RAS, PNM

DinoXcope: PNG, JPEG

+Movie:

DinoCapture2.0: WMV, FLV, SWF

DinoXcope: MOV

Microtouch : Touch sensitive trigger on the microscope for taking pictures

Lighting : Using 7 violet LEDs for excitation lighting and has a 430nm emission filter/1 white LED switched by software

Measurement Function : Yes

Calibration Function : Yes

Operating System Supported : Windows 10, 8, 7, Vista, XP;

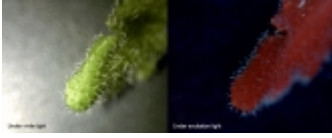
Mac OS 10.4 or later

Unit Weight : 100g

Unit Dimension : 10.5 cm (H) x 3.2 cm (D)

Package Dimensions : 16cm (L) x 16cm (W) x 6cm (H)

Gallery



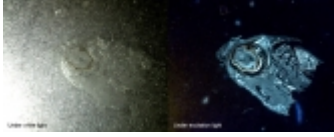
Cactus plant sample without fluorescent dye



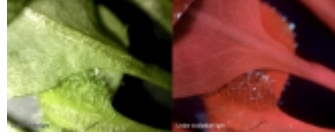
Plant leaf with excitation lighting



Skin sample at 50x



Paraffin section of zebra fish without staining



Cactus plant sample without fluorescent dye



Plant leaf with excitation lighting



Plant leaf with excitation lighting