



Ultra-long endurance,
Enables to capture the best moment.

Eye Series Outdoor Thermal Monocular

Wants Global Distributors

[home](#) > [Product](#) > [outdoor](#) > [eyethermalmonocular](#)



Meet Eye Series V2.0

The compact & elegant design and easy operational functions make the Eye series thermal imaging monocular the ideal vision enhancement tool in darkness.

Eye Series

E2n/E3n/E6n



- **High Image Quality**

The Eye series are is embedded with IRay independently developed high performance VOx detector which allows you to get high detailed thermal images, so as to make it simpler to search targets in darkness. Comprised of advanced software algorithms EYE is designed to increase imaging clarity and overall image detail which results in a sharper, more detailed field of view and enhanced object identification capabilities.



- **Quick Start-Up Time**

3s start-up time makes the Eye Series be quickly activated when the right time comes, which helps to save energy and extend the working hours.

- **Sufficient Operation Time**

Low power elements used in Eye Series provide sufficient operation time. Up to 15 hours operational battery life guarantees you don't have to worry about the power supply.



- **Pocket-Sized Thermal Vision Monocular**

The InfiRay EYE series is a pocket-sized thermal vision monocular for exploring the outdoors—at night and in lowlight conditions. EYE reveals your surroundings and helps you see people, objects and animals over hundreds meters away. Simple to use, with still image and video recording, EYE is the perfect companion, whether in the back country or your own backyard.

50Hz



9Hz



- **12um Thermal Imaging Sensor**

High performance 17 μ m pixel pitch detectors are embedded in the compact body.



- **Friendly Electrical Interface**

The EYE is designed with ease-of-operation in mind. The monocular can be connected to specified APP via USB cable which allows user to watch the real-time video, take picture and record video on mobile devices based on Android and iOS such as smartphone or

tablet. Internal menu items and options are also displayed on a contrasting gradient substrate so you can keep an eye on settings without losing sight of your objective.

• Standby Function

When it is necessary to temporarily stop observation the user can apply standby function. It provides the necessary level of camouflage (no light from the eyepiece of the device) between observation sessions as well as the fast restart of observation (when display is turned off, all other systems are working; for normal operation it is enough just to power on the display again).



- **Compact Size and Lightweight**

Compact size and lightweight becomes important in outdoor using, which ensure the highest level of comfort and usability.

- **5 Color Palettes**

The Eye series provides more than 5 color palettes for true colorized temperature mapping, including “white hot”, “black hot”, “red hot”, “color” and “hot target highlight”. Switching between different color palettes is fast and easy.



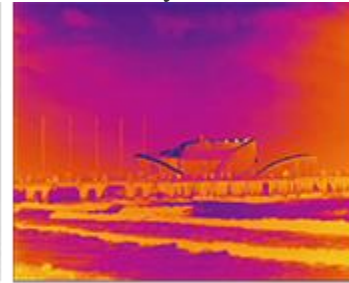
white hot



black hot



red hot



color



hot target highlight

- **Long Detection Range**

Powerful objective lens in combination with professional grade thermal imaging sensor with NETD 50 mK provides exceptional detection capabilities. An average human-size target can be detected at a 1300m distance in complete darkness.

Your Wise Choose With Eye Series V2.0

Model	E2n	E3n	E6n
Detector Resolution	240x180	384x288	640x512
Pixel Size	17μm	17μm	12μm
NETD	≤40mk	≤40mk	≤40mk
Frame Rate	50Hz	50Hz	50Hz
Objective Lens	13mm	19mm	25mm
Field of View	17.8°x13.4°	19.5°x14.7°	17.5°x14°
Display Resolution	720*540	720*540	720*540
E-zoom	0.93~1.86	0.85-3.4	0.95-3.8
Max. Battery Life	15h	15h	12h
Dimension, mm	160×62×62	160×62×62	185×62×62
Weight	<320g	<320g	<400g
Detection Range (Target size:1.7m×0.5m, P(n)=99%)	476m	696m	1298m

Product consulting

* Message contents :



Mobile phone :

* Country :

* Product :

E-mail :

Submit

CONTACT US

Marketing Dept.Email:sales@infiray.com

HR Email:hr01@infiray.com

Sales Hotline:+86-400-998-3088

After sales hotline:+86-400-883-0800

Address:11th Guiyang Street, YEDA,Yantai 264006,P.R.China

IMAGERS

Thermal Monocular

Phone Thermal Camera

Car Thermal Camera

Clip on Thermal Scope

Rico Thermal Scope

Tube Thermal Scope

Dual spectrum thermal imager

online monitring thermal camera

MODULES

Micro III Thermal Imaging Module

Mini Thermal Imaging Module

LT Temperature Measurement Module

FT Alarming Thermal Imaging Module

Phoenix Cooled MWIR Imaging Module

APPLICATIONS

Infrared Thermography

Security Thermal Camera

Night Vision

UAV Thermal Module

Smart Phone

Automotive Thermal Camera

Follow Us :



